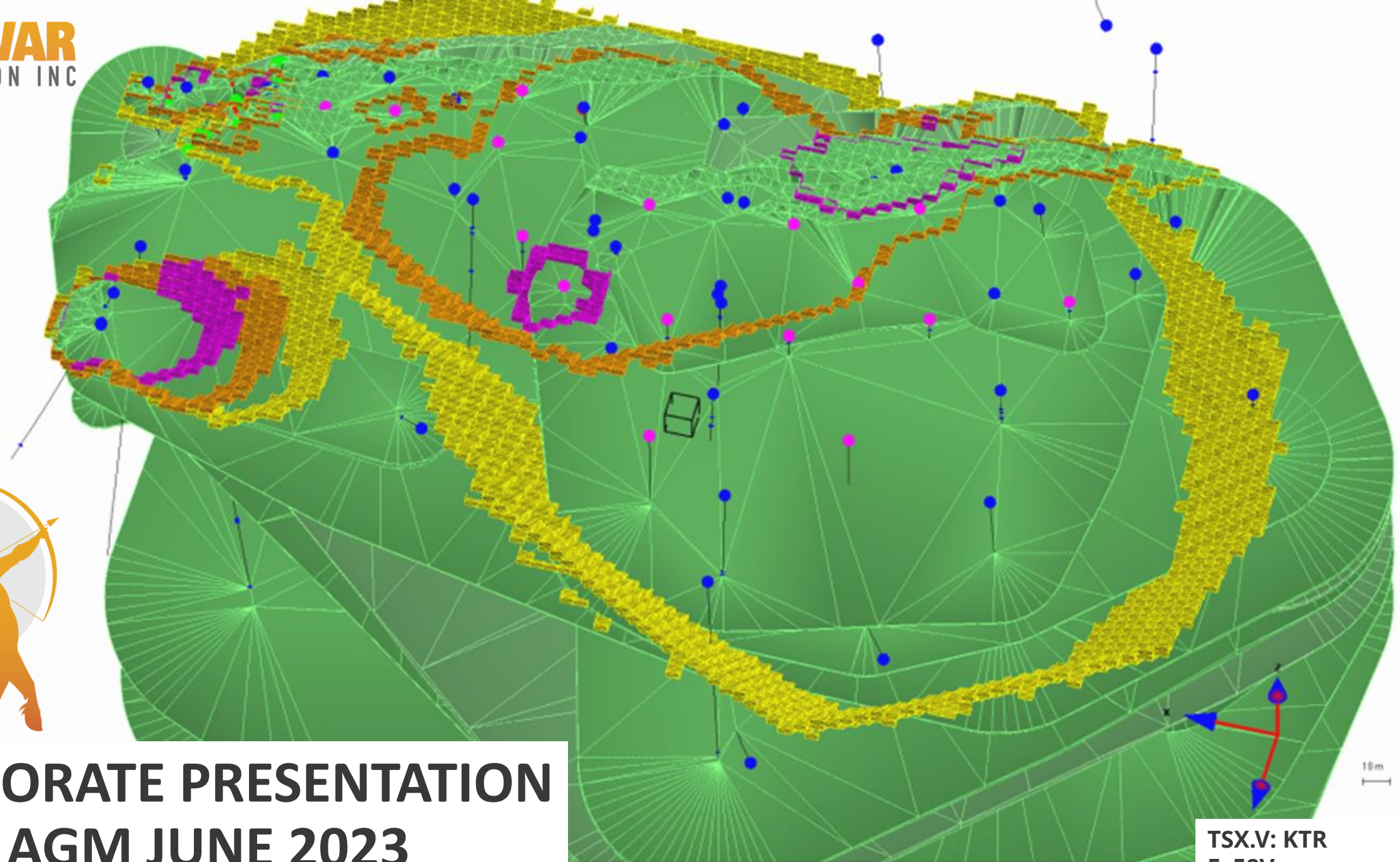




CORPORATE PRESENTATION

AGM JUNE 2023



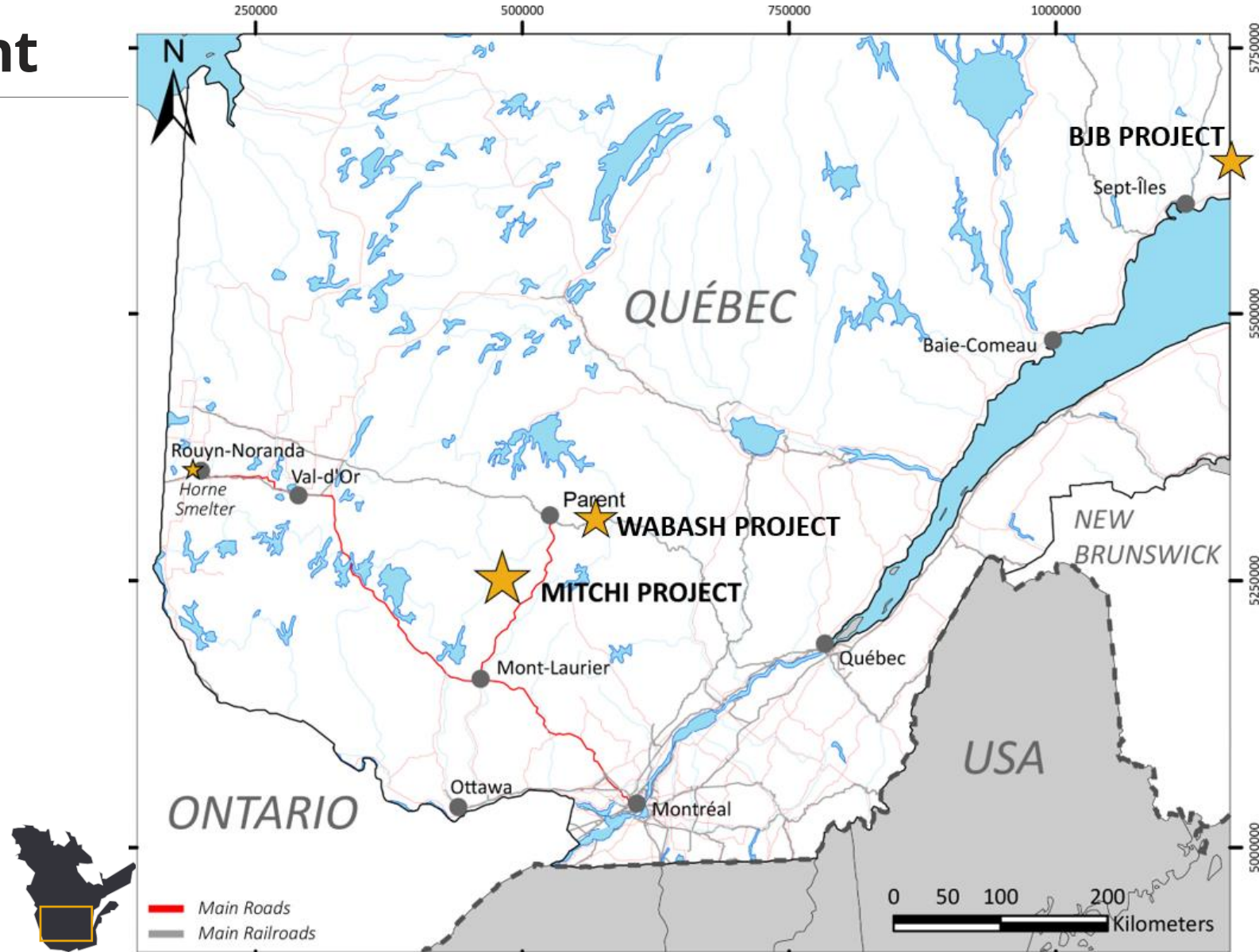
TSX.V: KTR
F: 58V

Forward-Looking Statement

Our presentation contains “forward-looking statements” not based on historical facts. Forward-looking statements express, as of the date of this presentation, our estimates, forecasts, projections, expectations and opinions as to future events or results. The forward looking statements that are contained in this presentation are based on various assumptions and estimates by the Corporation and involve a number of risks and uncertainties. As a consequence, actual results may differ materially from results forecast or suggested in these forward-looking statements and readers should not place undue reliance on forward-looking statements. We caution you that such forward-looking statements involve known and unknown risks and uncertainties, as discussed in the Corporation’s filings with Canadian Securities Administrators. Various factors may prevent or delay our plans, including but not limited to, contractor availability and performance, weather, access, mineral prices, success and failure of the exploration and development carried out at various stages of the program, and general business, economic, competitive, political and social conditions. The Corporation expressly disclaims any obligation to update any forward-looking statements, except as required by applicable securities laws.

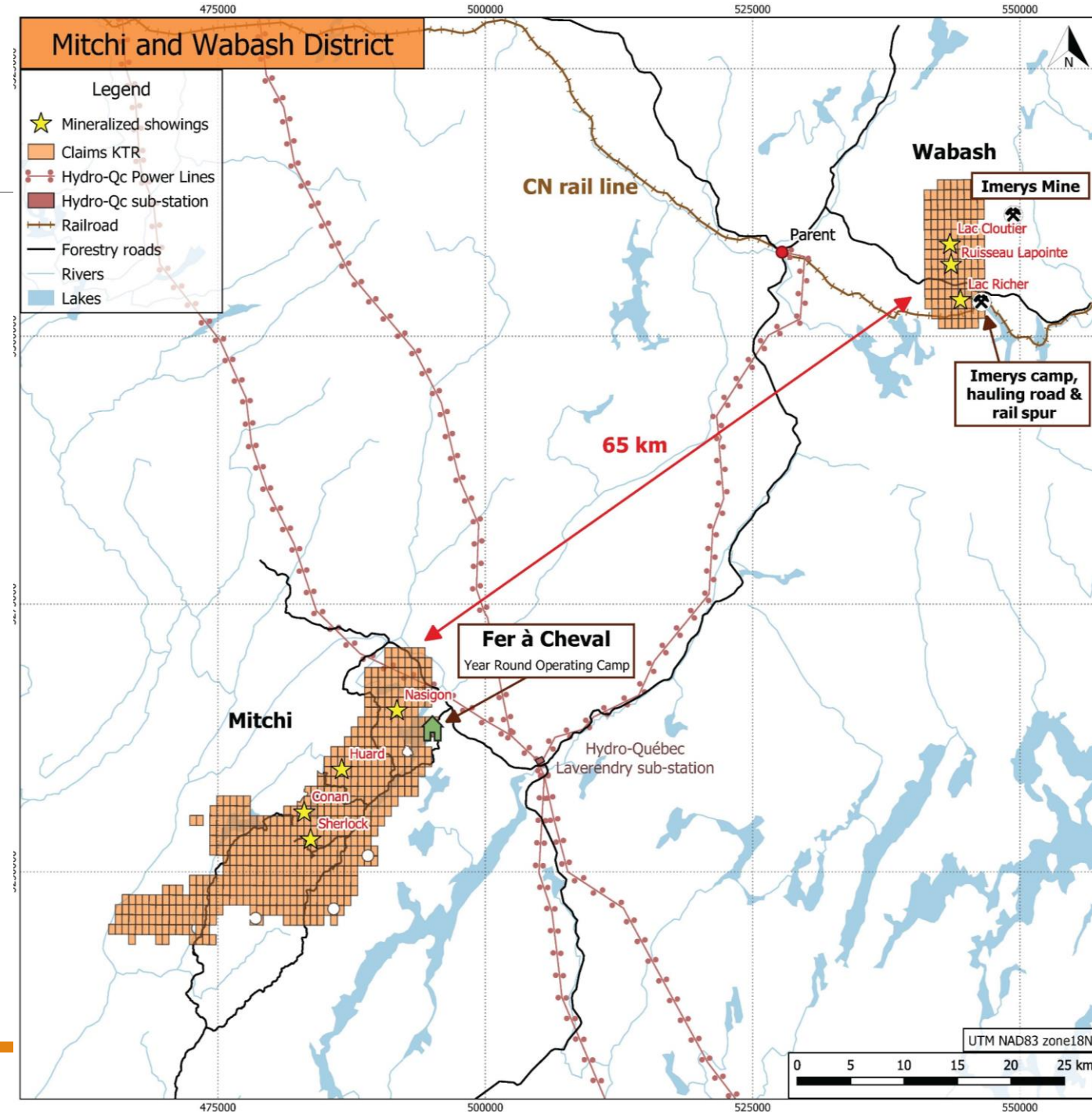
Cu-Ag District Development

- ➔ **Quebec – safe & stable jurisdiction**
- ➔ Support from the local communities
- ➔ **Road and rail access**
- ➔ Year-round camp (+cashflow)
- ➔ **ESG – Connected to Hydro Quebec grid**
- ➔ Stratiform mineralization in the Grenville geological province
- ➔ **District scale mineralization at Mitchi-Wabash**
- ➔ Proven exploration strategy
- ➔ **Hub and Spoke model**
- ➔ Multi-pit operation with a central mill



Mitchi-Wabash District

- Two stratabound sediment hosted copper-silver projects
- **Grenville geology metamorphosed and structurally deformed the basins**
- **Sherlock Zone – 1st open pit resource defined**
- Additional Zones to be added gradually
- Evaluating other regional targets for additional mineralized basins
- Evaluating economics for a central mill

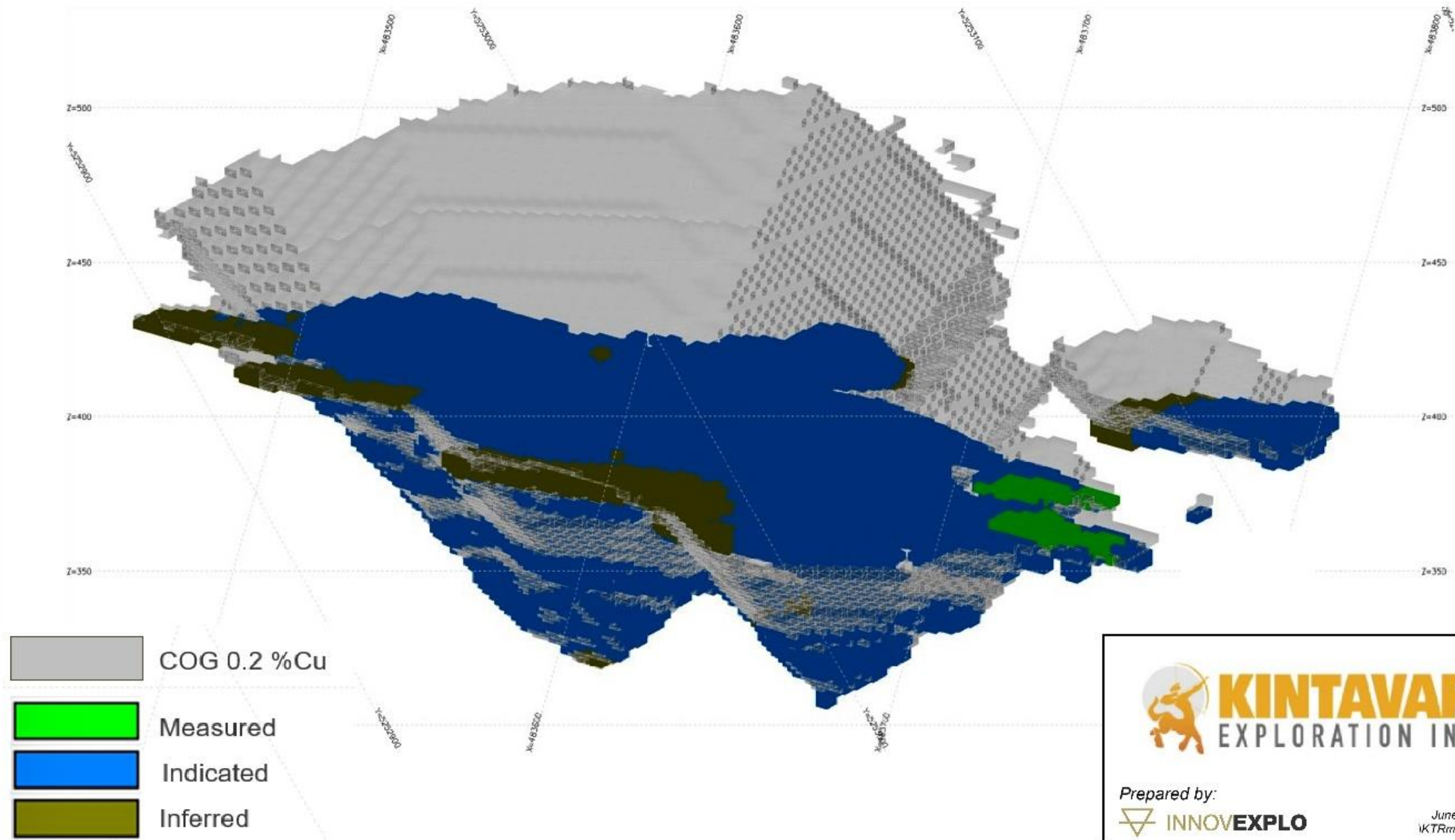


Mitchi Project - Sherlock Zone – Resource Model

- ➔ Cut off grade 0.2% Cu
- ➔ Based on 66 drill holes, 10,150m from 2017 to 2022
- ➔ Approximate pit size 450m x 200m
- ➔ Max depth 150m
- ➔ Strip ratio 4:1
- ➔ Pit walls 50°
- ➔ Cu recovery 85%
- ➔ Concentrate 40% Cu

Mitchi Project	Mineral Resources	Tonnes	Copper (%)	Silver (g/t)	Lbs of Copper	Ounces of Silver
Sherlock	Measured	6,000	0.47	2.4	57,200	400
	Indicated	2,983,000	0.40	4.0	26,305,300	385,500
	Measured + Indicated	2,989,000	0.40	4.0	26,362,500	385,900
	Inferred	85,000	0.35	3.8	653,400	10,200

SHERLOCK MRE



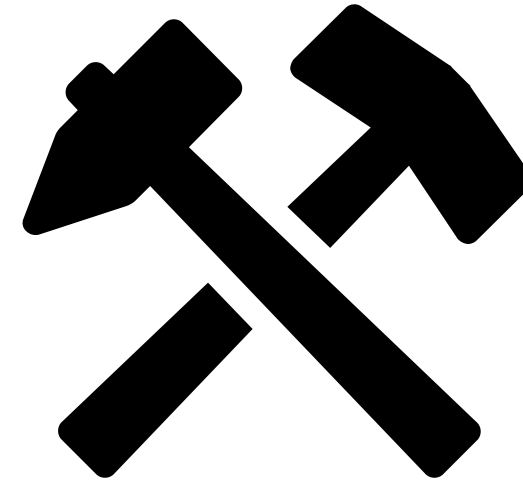
Prepared by:



June 15, 2023
KTRmit22G101

Mitchi Project - Sherlock Zone – Resource Model

- ➔ Parameters used:
 - ➔ \$3.80 US/lbs Cu
 - ➔ USD/CAD 1.32
 - ➔ XRF Sorting recovery 81% & 45% Mass pull
 - ➔ Mining cost \$3/t mined
 - ➔ Sorting \$0.40/t mined
 - ➔ Processing cost \$20/t milled
 - ➔ G&A \$9.50/t milled
 - ➔ Transport \$90/t of concentrate
- ➔ Mill throughput: 1,000 tpd
- ➔ Life of mine: 5 years



Mitchi Project - Sherlock Zone – Resource Model

- ➔ XRF Sorting
- ➔ Radox particle sorters
- ➔ Bench scale study completed
- ➔ Lowers volume to the mill
- ➔ Higher grade
- ➔ Smaller tailings footprint



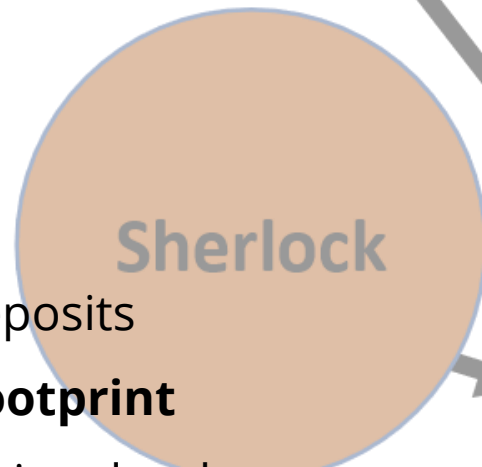
Mitchi Project - Sherlock Zone – Next Steps

- ➔ Preliminary Economic Assessment
 - ➔ Establish CAPEX for the mine & plant
 - ➔ Pit optimization
- ➔ Geotechnical drilling
 - ➔ Increase pit slopes
 - ➔ Lower strip ratio
 - ➔ Increase resources
- ➔ Additional Drilling
 - ➔ More resources
- ➔ Metallurgy
 - ➔ Sorting bulk sample to optimize parameters
 - ➔ Processing bulk sample to optimize flowsheet



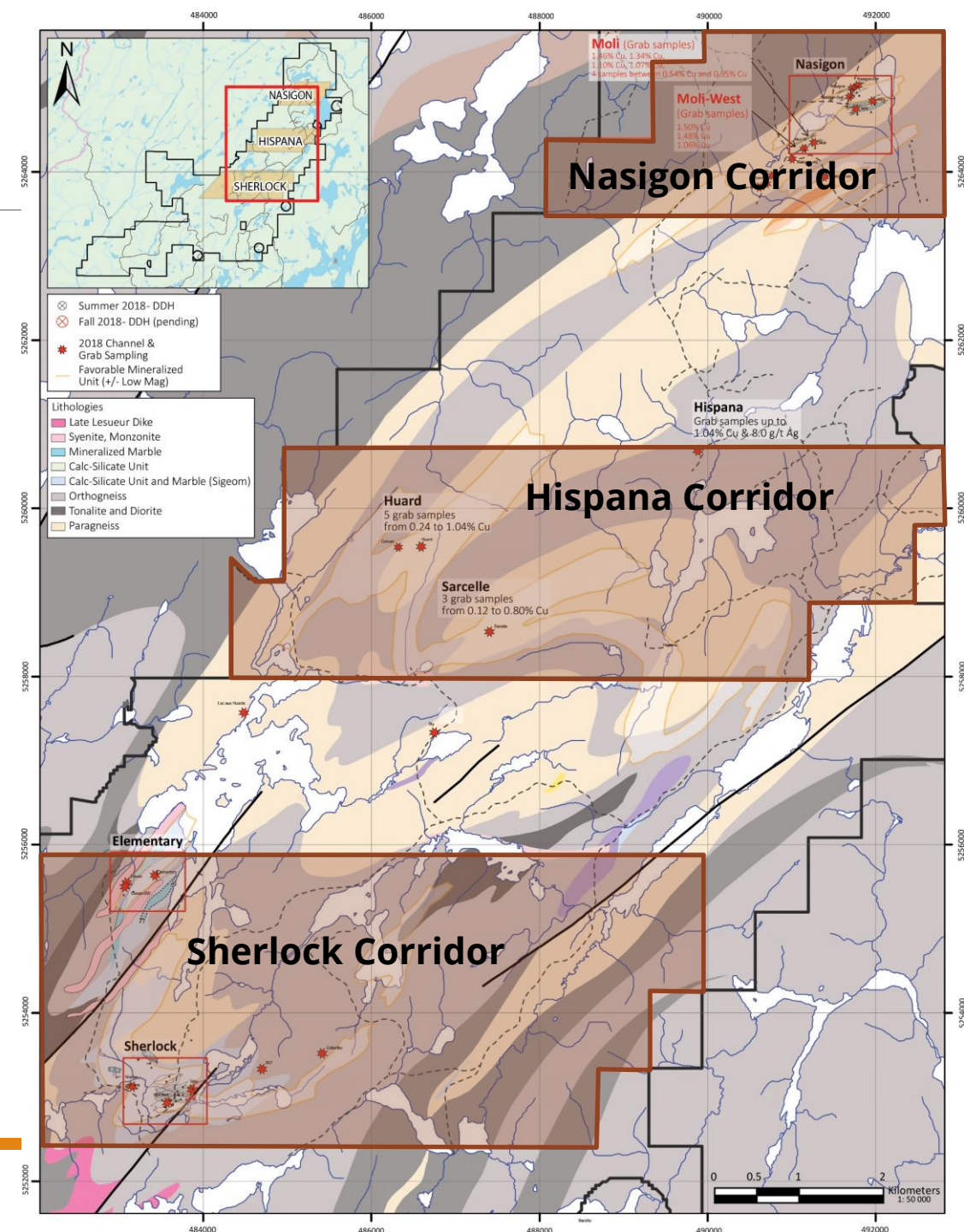
Mitchi Project – New Targets Definition

- Sherlock – starter pit
- 5 ready targets to add resources
- Focus on
 - Shallow targets
 - low strip ratio
 - Grade >0.5% Cu
- Central mill & satellite deposits
- **Small environmental footprint**
- Targeting **low CAPEX** mining development
- Gradually increase plant throughput

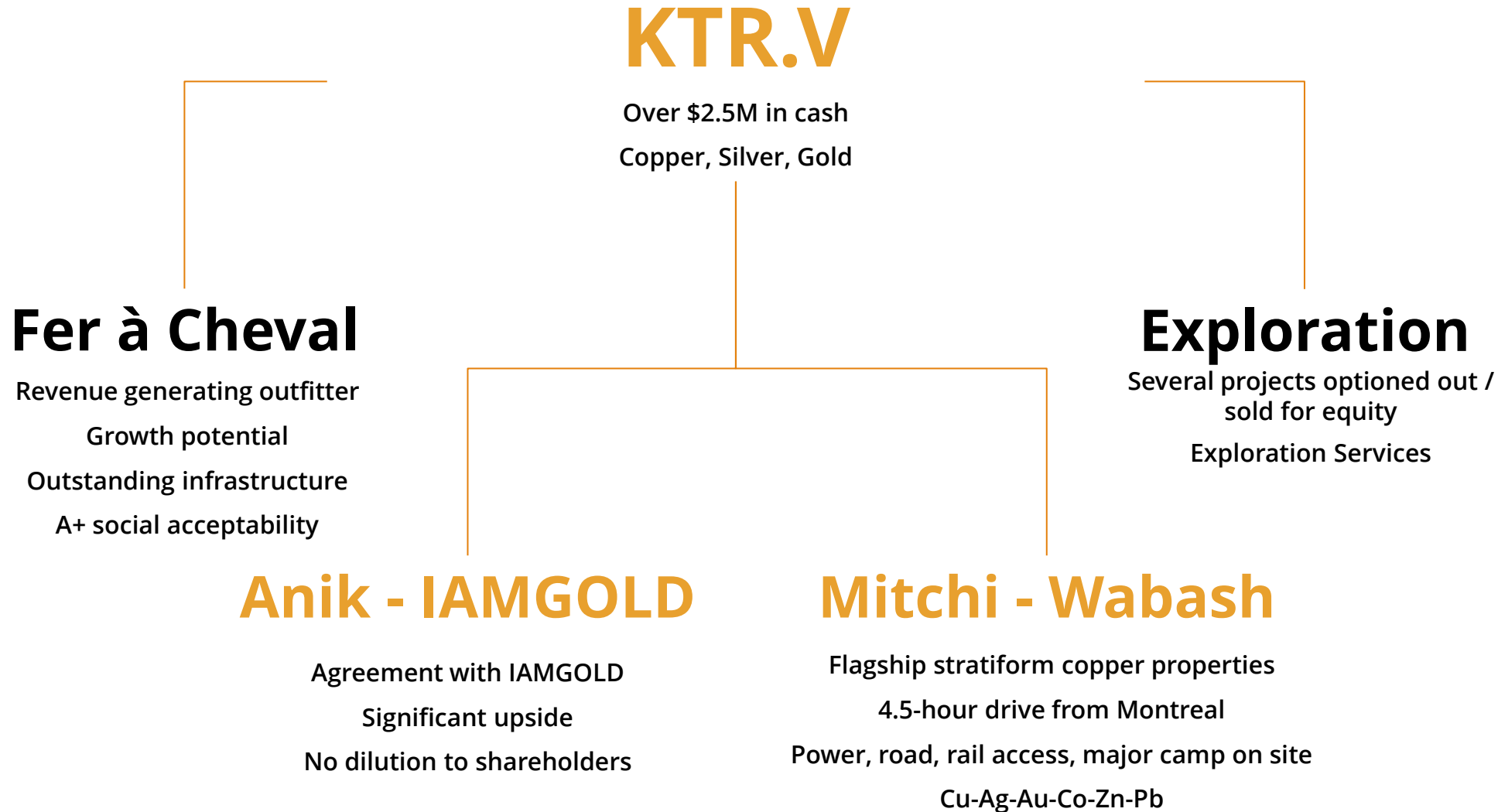


Mitchi Project – New Targets

- ➔ Developing new targets on the Mitchi project
- ➔ Sherlock corridor
 - ➔ Elementary
 - ➔ Conan
 - ➔ Watson
 - ➔ 007
 - ➔ Colombo
- ➔ Hispana corridor
- ➔ Nasigon
- ➔ Exploration to follow the PEA recommendations



Kintavar Overview



District Discovery
First of its kind



Management
raised over \$750M



Technical Team
several discoveries
& mines built





KINTAVAR
EXPLORATION INC



FER À CHEVAL
POURVOIRIE

Kiril Mugerman, President & CEO
kmugerman@kintavar.com

Alain Cayer, VP Exploration
acayer@kintavar.com

**Mathieu Bourdeau, CFO &
Responsible for Fer à Cheval**
mbourdeau@kintavar.com

Kintavar Exploration Inc.
75 Boul. de Mortagne
Boucherville, QC J4B 6Y4
Canada

+1 450 641 5119

www.kintavar.com

 @Kintavar