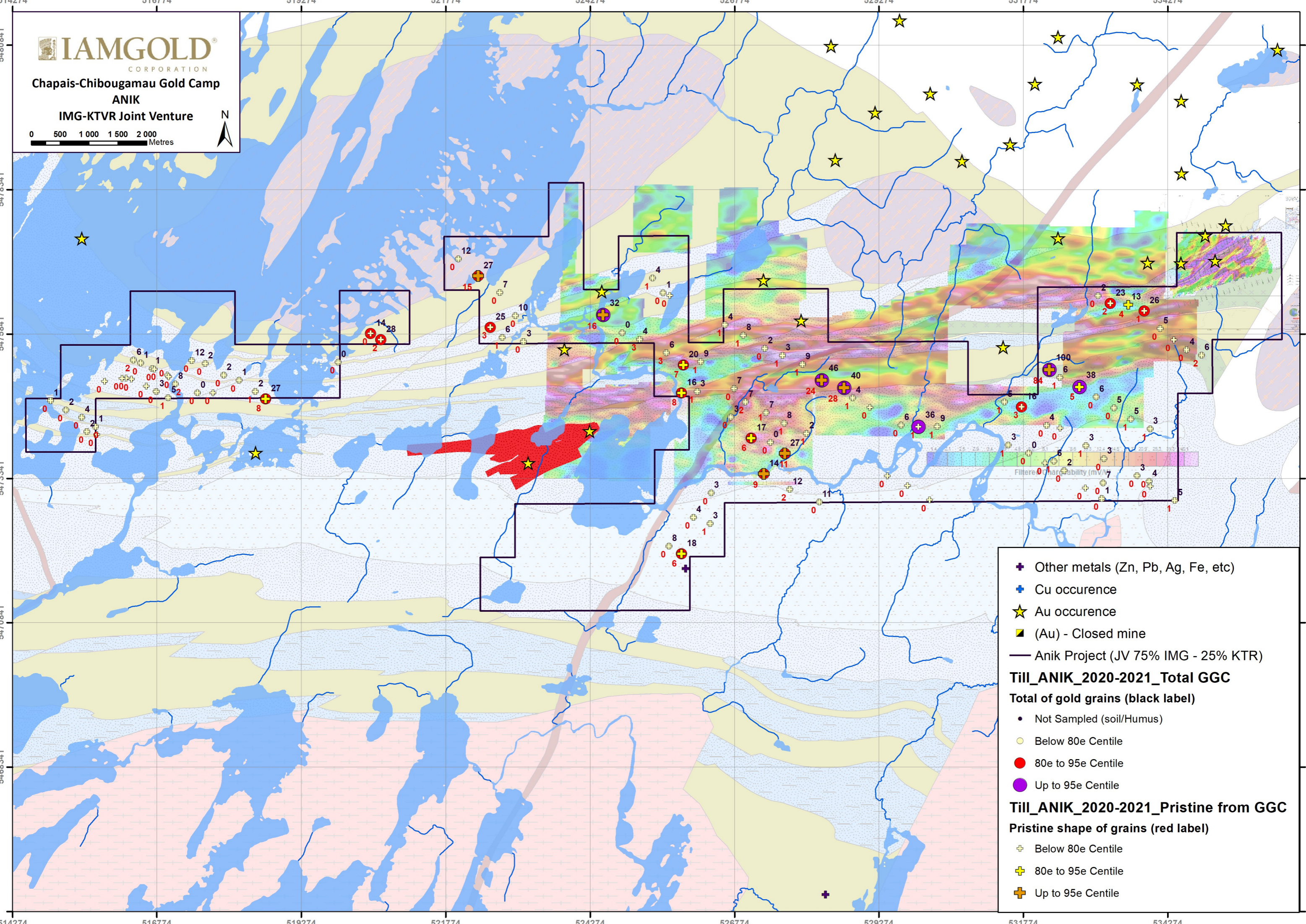
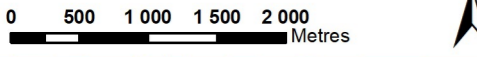




Chapais-Chibougamau Gold Camp
ANIK
IMG-KTVR Joint Venture



- ⊕ Other metals (Zn, Pb, Ag, Fe, etc)
- ⊕ Cu occurrence
- ★ Au occurrence
- (Au) - Closed mine
- Anik Project (JV 75% IMG - 25% KTR)

Till_ANIK_2020-2021_Total GGC

Total of gold grains (black label)

- Not Sampled (soil/Humus)
- Below 80e Centile
- 80e to 95e Centile
- Up to 95e Centile

Till_ANIK_2020-2021_Pristine from GGC

Pristine shape of grains (red label)

- ⊕ Below 80e Centile
- ⊕ 80e to 95e Centile
- ⊕ Up to 95e Centile