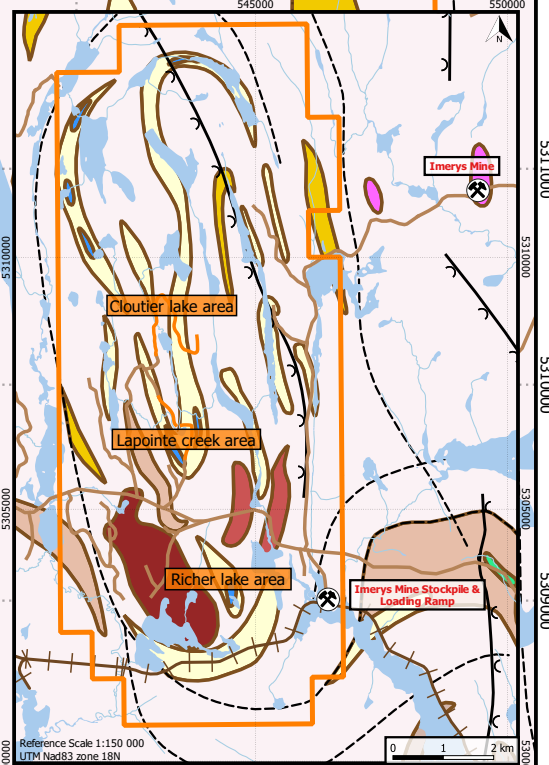
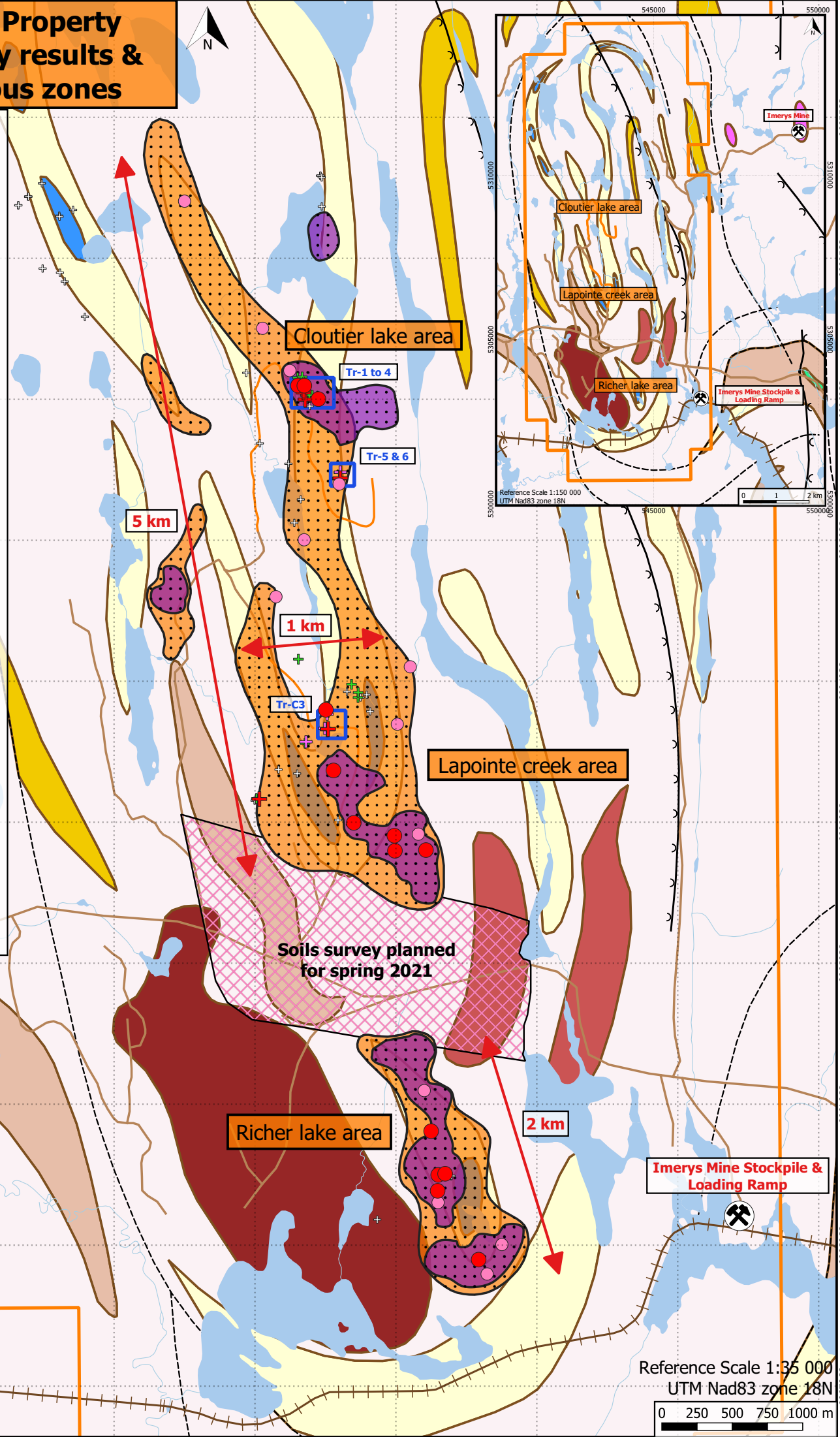


# Wabash Property Soil survey results & anomalous zones

## Legend

- Soils Cu anomalies (ppm)**
- > 44 (98th percentile)
  - > 65 (99th percentile)
  - Areas with most samples over the 90th percentile
  - Soils strong Cu & key elements anomalies areas
  - Soils survey planned for spring 2021
  - Fall 2020 working areas
- Summer 2020 grabs  
Cu assays (%)**
- + 0.00 - 0.01
  - + 0.01 - 0.10
  - + 0.10 - 0.50
  - + 0.50 - 1.00
- Forestry roads & trails  
ATV & winter trails  
Railroad  
Rivers and streams  
Lakes  
KTR property limits
- Modified geology from SIGÉOM**
- Amphibolite
  - Calcitic marble
  - Granitic gneiss
  - Migmatite
  - Monzodiorite
  - Diorite, tonalite
  - Paragneiss
  - Phlogopite glimmerite
  - Syenite
- Regional faults  
Regional folds



Reference Scale 1:35 000  
UTM Nad83 zone 18N

0 250 500 750 1000 m