



KINTAVAR
EXPLORATION INC

STRATIFORM COPPER IN QUEBEC

CORPORATE PRESENTATION
SEPTEMBER 2018

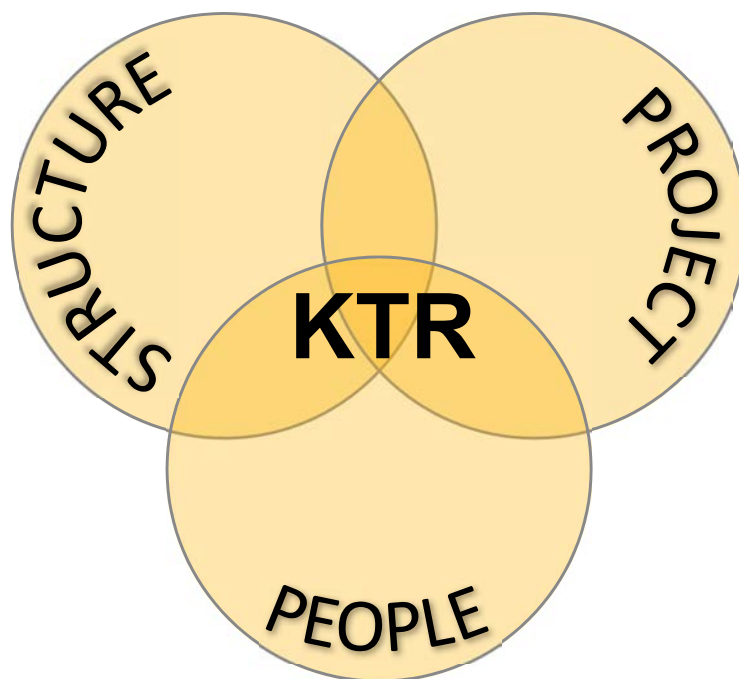
TSX.V: KTR
F: 58V

FORWARD-LOOKING STATEMENT

Our presentation contains “forward-looking statements” not based on historical facts. Forward-looking statements express, as of the date of this presentation, our estimates, forecasts, projections, expectations and opinions as to future events or results. The forward looking statements that are contained in this presentation are based on various assumptions and estimates by the Corporation and involve a number of risks and uncertainties. As a consequence, actual results may differ materially from results forecast or suggested in these forward-looking statements and readers should not place undue reliance on forward-looking statements. We caution you that such forward-looking statements involve known and unknown risks and uncertainties, as discussed in the Corporation’s filings with Canadian Securities Administrators. Various factors may prevent or delay our plans, including but not limited to, contractor availability and performance, weather, access, mineral prices, success and failure of the exploration and development carried out at various stages of the program, and general business, economic, competitive, political and social conditions. The Corporation expressly disclaims any obligation to update any forward-looking statements, except as required by applicable securities laws.

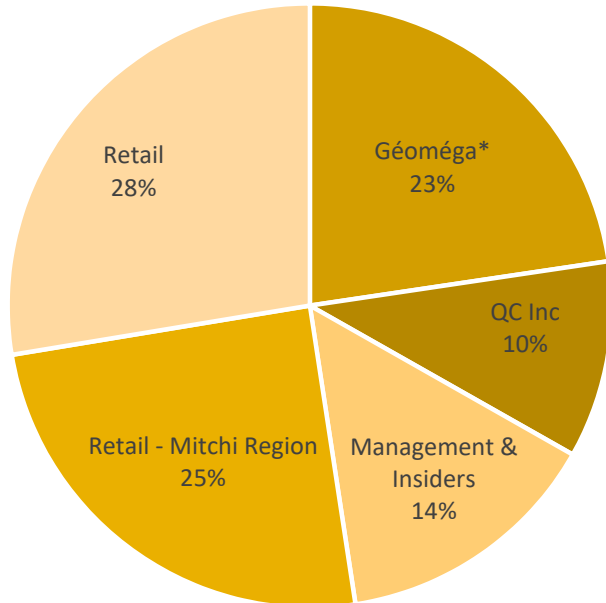
Why invest in KINTAVAR?

- SOLID SHARE STRUCTURE <30% FLOAT
- QC FUNDS, GMA.V, MITCHI INVESTORS & INSIDERS > 70%
- WELL FUNDED (\$9.3M on 06/30/2018)
- MAJOR COPPER DISCOVERY
- QUEBEC – MINING FRIENDLY JURISDICTION
- ROAD, POWER, 150 PPL CAMP ON SITE
- FOLDED STRATIFORM COPPER
- UP TO 30,000 M DRILLING PROGRAM



- DYNAMIC, EXPERIENCED AND TECHNICAL MANAGEMENT & BOARD OF DIRECTORS

Capital Structure



Capital Structure

Shares Outstanding: 79,224,549

Warrants: 13,204,533 (\$0.70, \$0.18, \$0.14\$)

Options: 6,971,250

Fully Diluted: 99,400,332

Cash: \$9.3M (06/30/2018)

*Portion escrowed;

**Approximate & portion is escrowed



Analyst Coverage

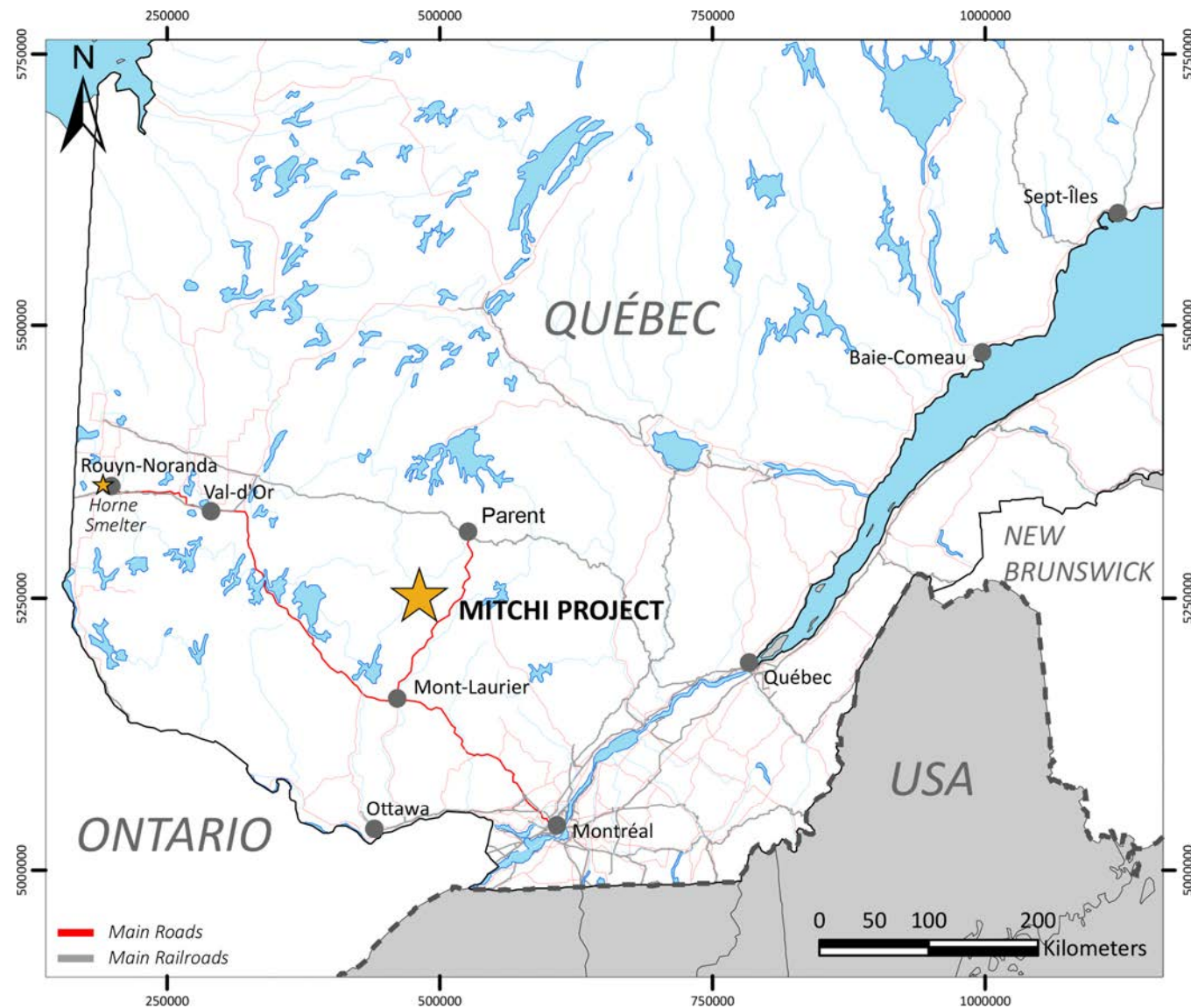
Eric Lemieux – EBL consultants

Major Partners



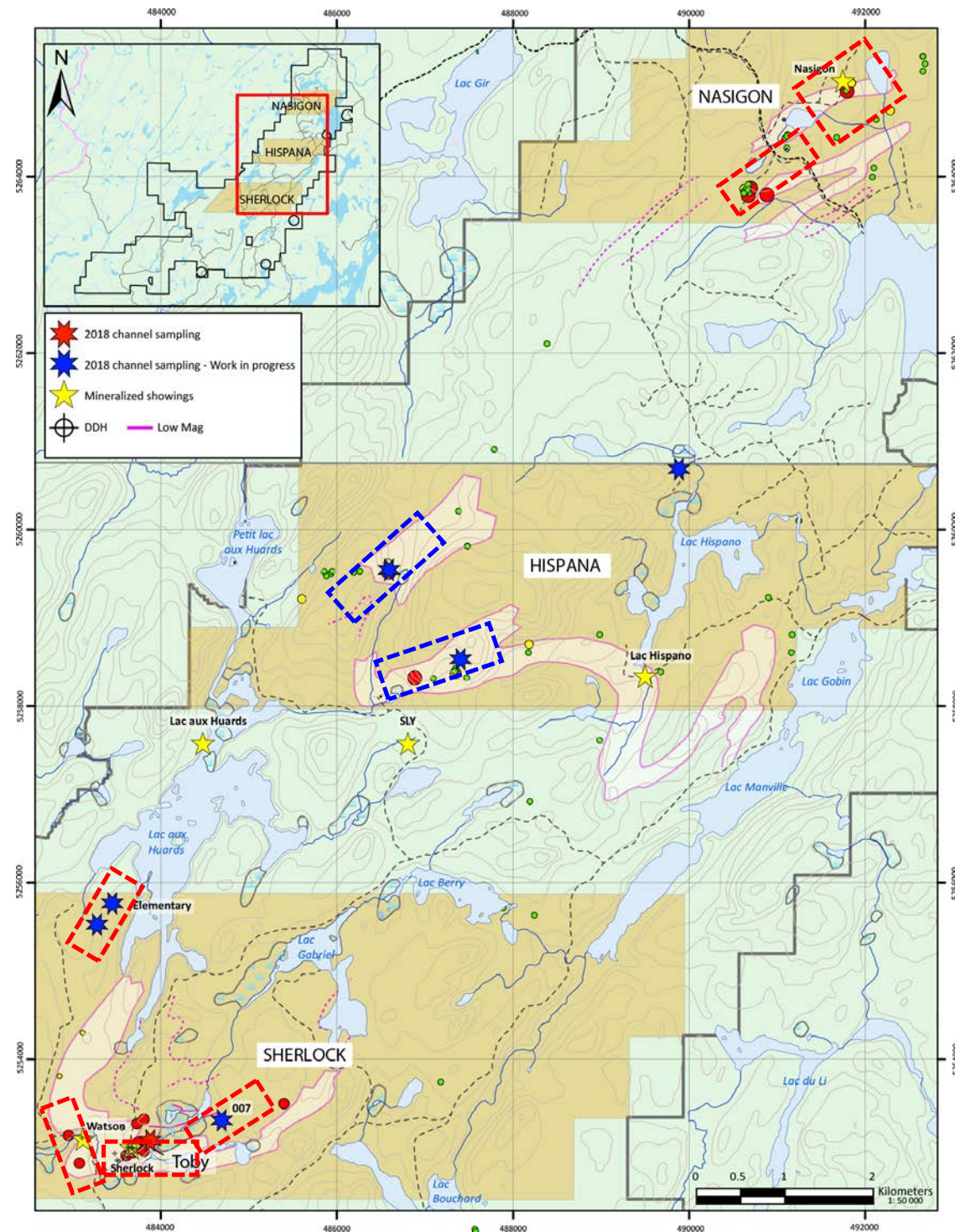
Infrastructure & Jurisdiction

- Quebec – a safe & stable jurisdiction
- Easy access
- Support from the local communities
- Road and rail access to a smelter, major sea ports and the US
- 150 people capacity camp on site
- 538 claims – 30,609 hectares
- Entire sedimentary basin secured & Royalty free

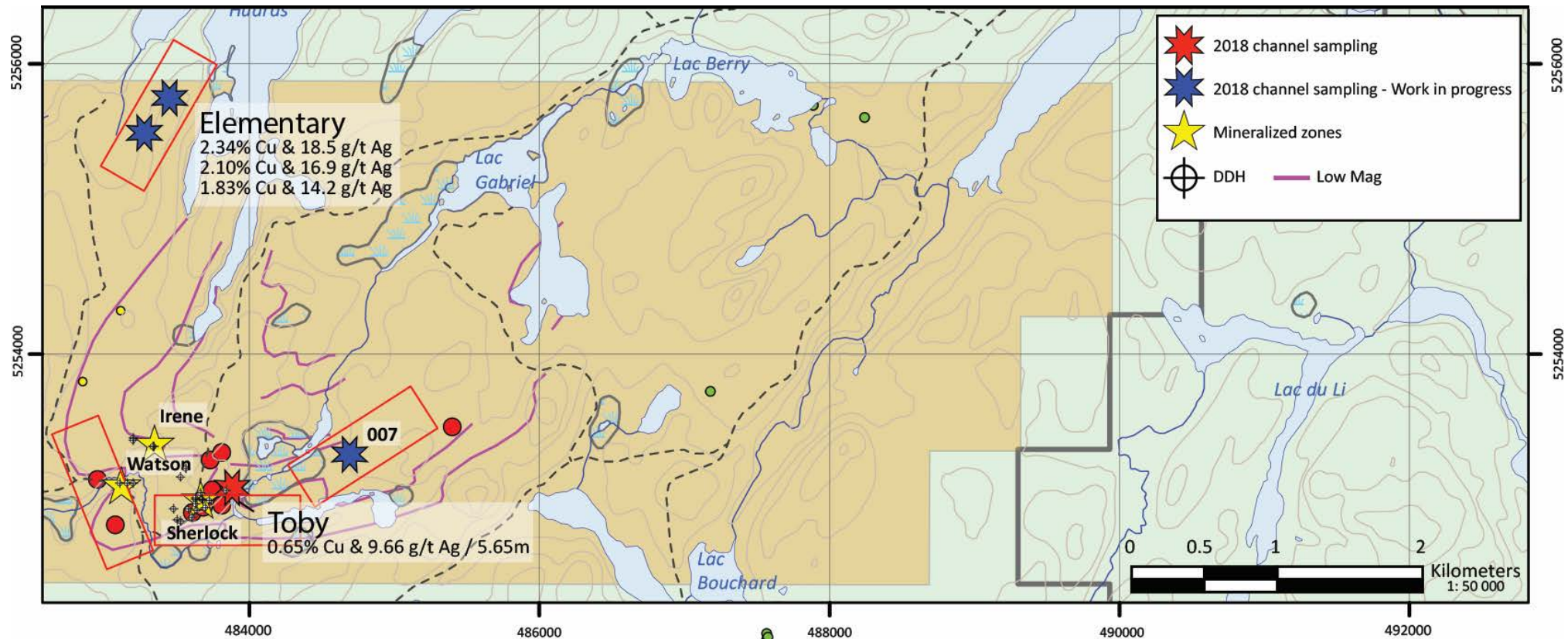


Mitchi Project

- Building a large copper resource block by block over 3 corridors
- Same disseminated copper mineralization: bornite, chalcopyrite and chalcocite over the entire area
- Target generation simple and low cost:
 - low mag zones
 - low-moderate IP targets
 - soil geochemistry
 - boulder hunting
- Mineralization starts from surface – Multiple Open pit potential
- Over 6 km combined of mineralization identified on the 3 corridors

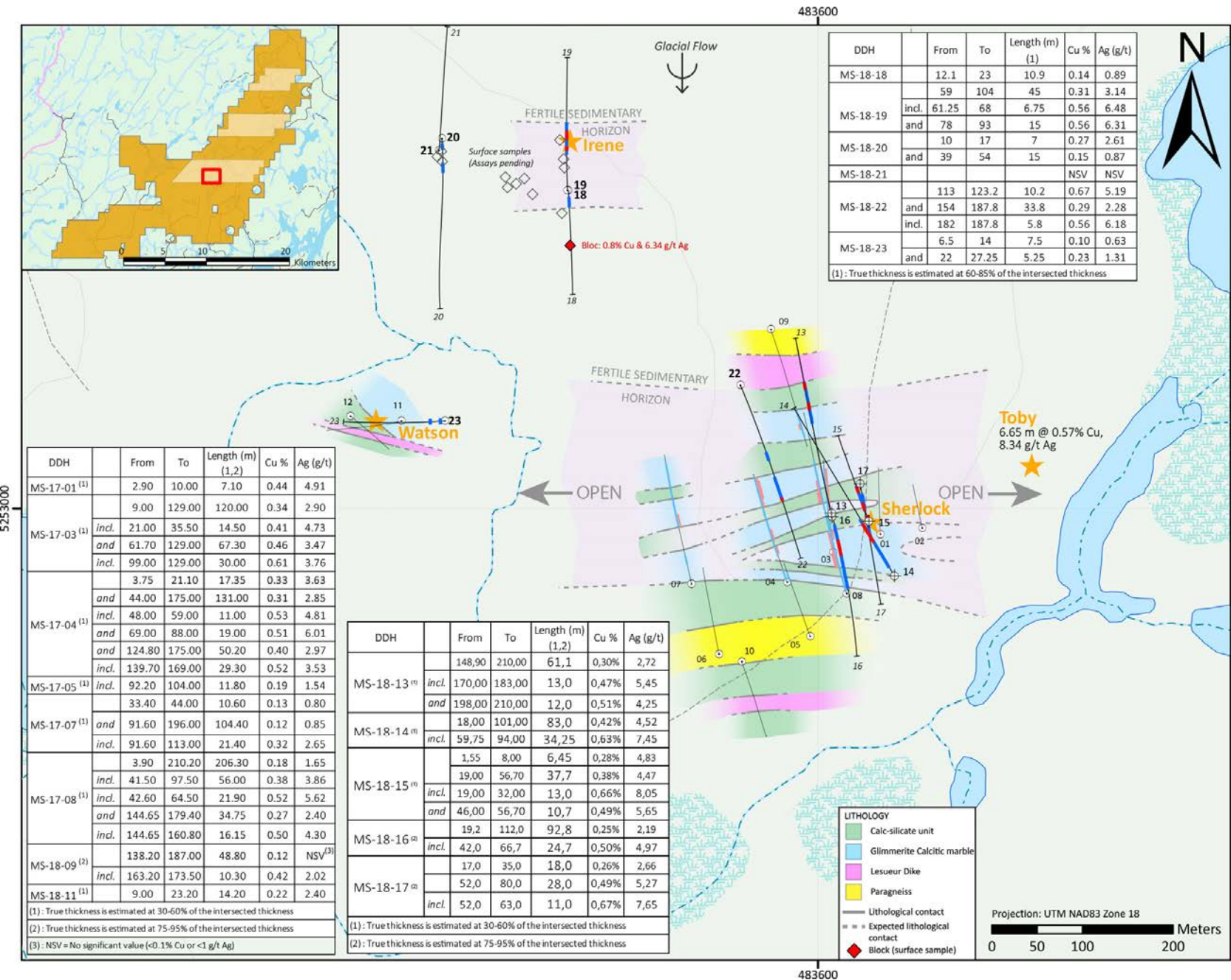


Sherlock Corridor



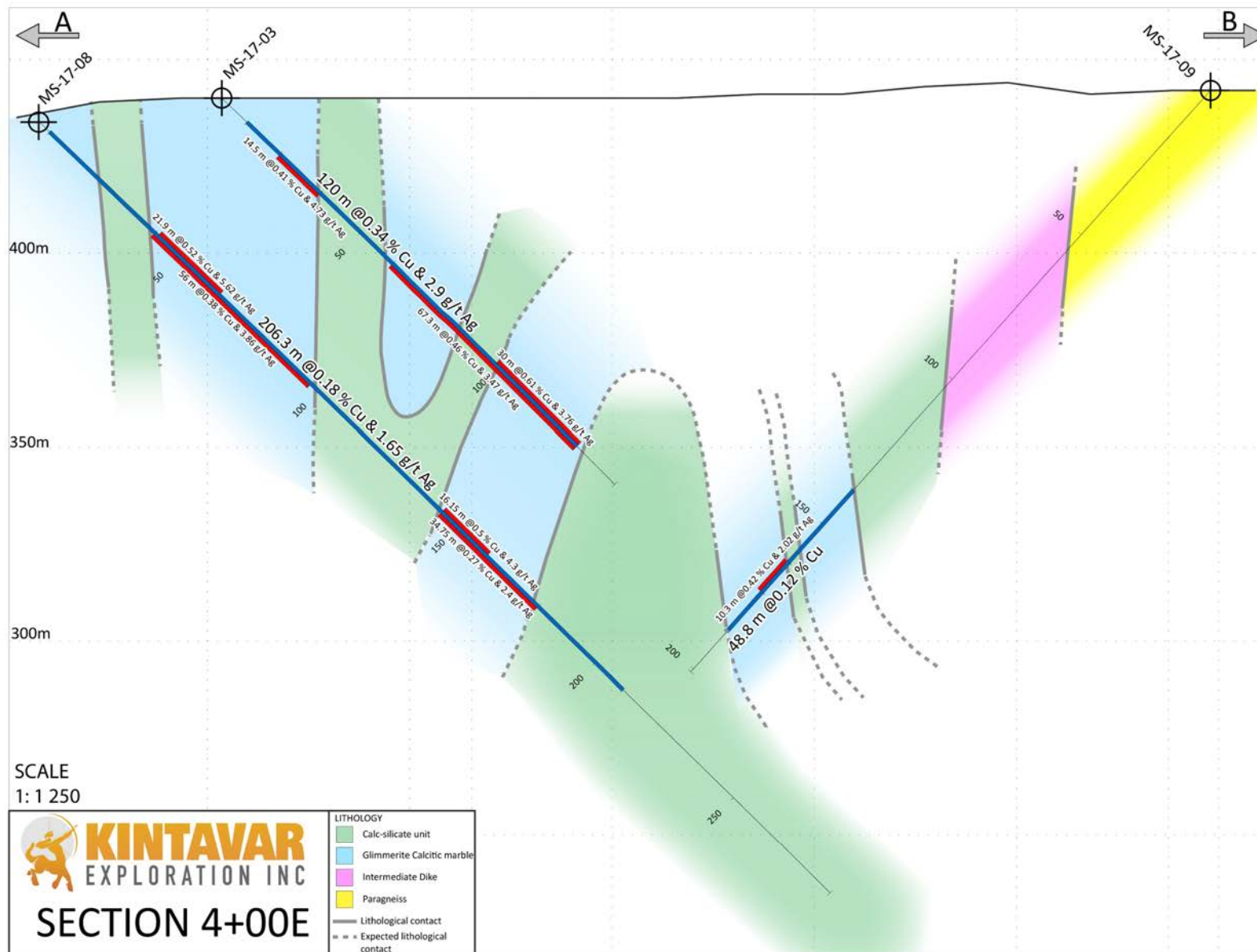
- Assays pending on additional 13 holes on Sherlock Corridor
- Mineralization continuity confirmed to East of Sherlock towards Toby
- New zones identified: Irene, Elementary, Toby, 007 and others are pending assays
- 4.5 km of mineralization along strike
- Connecting the entire basin together block by block

Sherlock Block



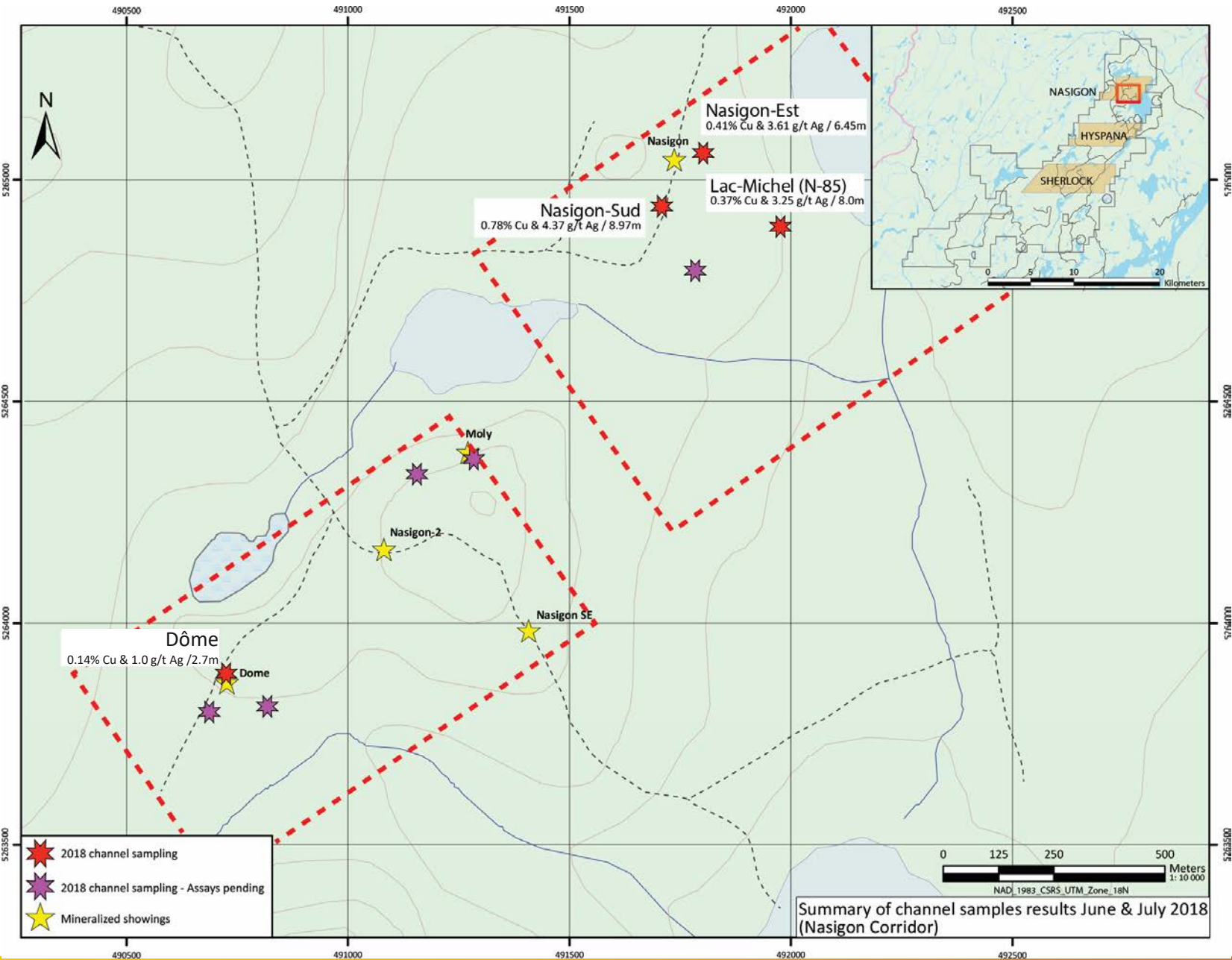
- Initial 5 DDH assays
- MS-18-14 – 83m @ 0.42% Cu & 4.52 g/t Ag
- MS-18-15 – 92.8m @ 0.25% Cu & 2.19 g/t Ag
- Drilling provided understanding of the geometry
- Now focusing on extensions & new zones to build large volume

Sherlock Block Drilling



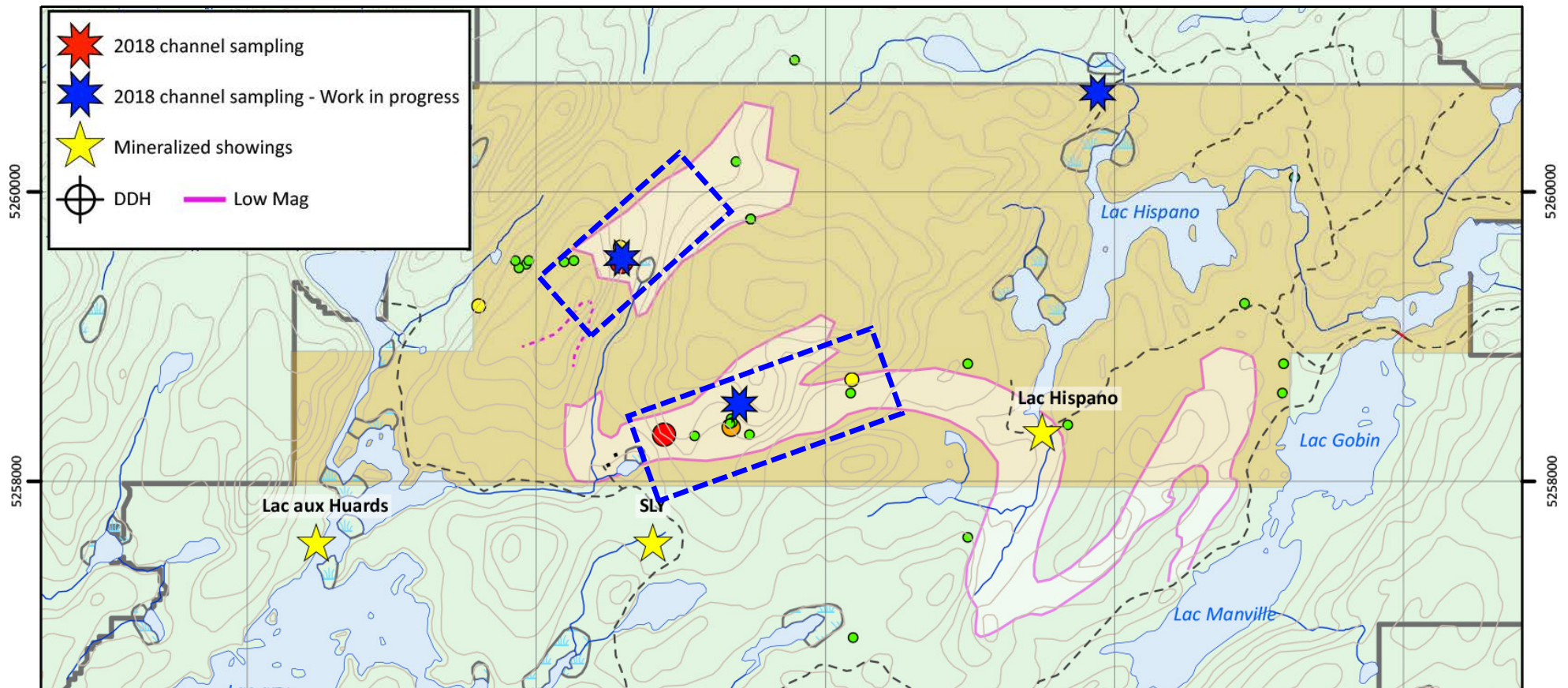
- Folding causes structural thickening
- Max thickness of mineralization not drilled yet
- Mineralization from surface
- Fold hinges gently dipping

Nasigon Corridor



- High grade zones identified on surface and intersected in drilling
- 20 drill holes during summer 2018 – assays pending
- Mineralization identified over 2 km long

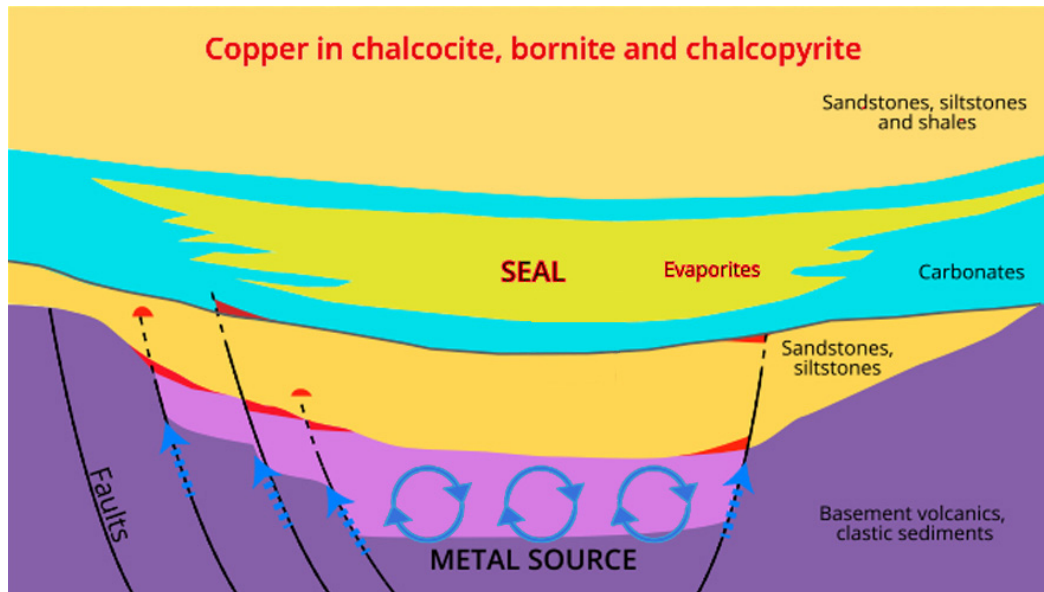
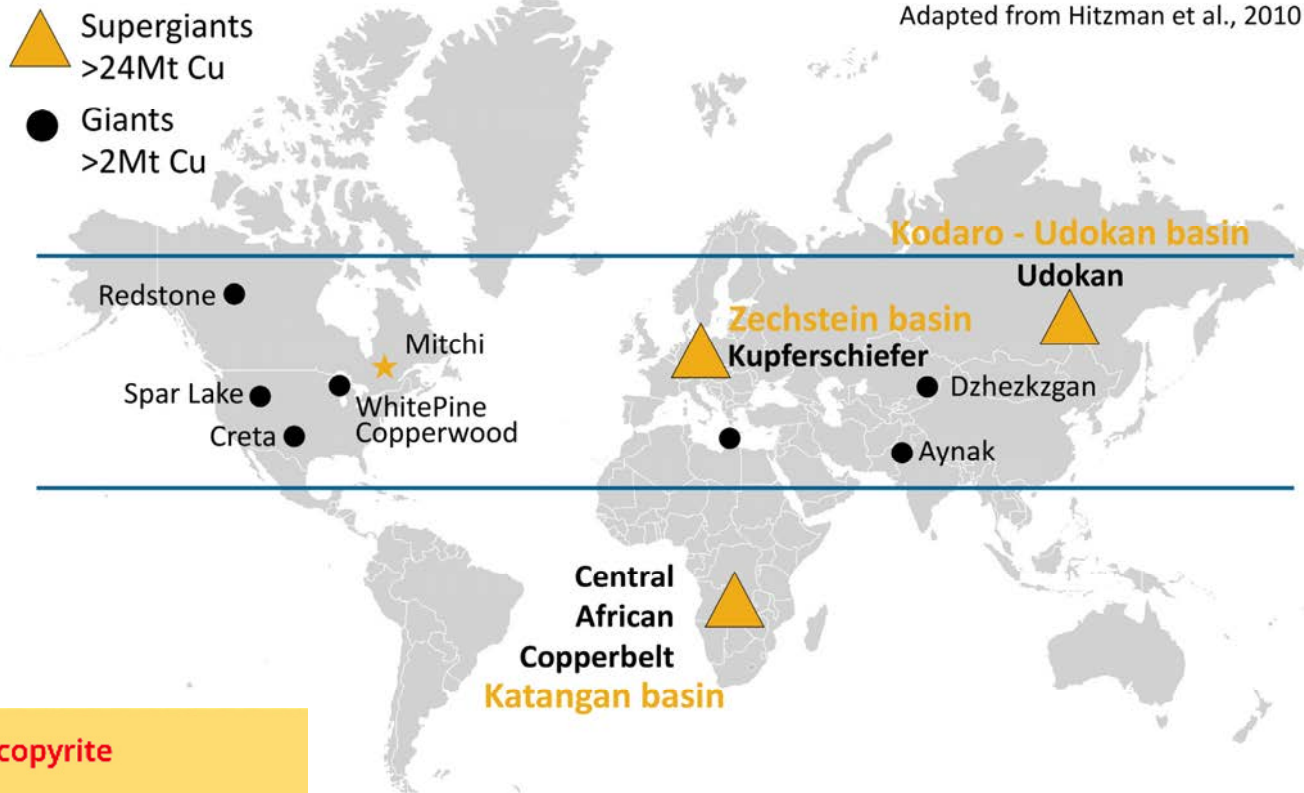
Hispana Corridor



- Initial surface work provided positive results
- Completed a large IP survey (>70 km)
- Follow-up with trenching and channel sampling will continue until November
- First drilling expected in November / December

What are stratiform copper deposits?

- Over 20% of global copper production
- Typically of Proterozoic age (2,500Ma to 541Ma)
- Associated with large sedimentary basins and evaporites



- Typically narrow flat lying underground deposits – underground mining
- Mineralization can include Ag, Pb, Zn, Co or Mn

Grenville effect – Mitchi stratiform copper

The Grenville deformation effect

- Folding repeats the typically narrow mineralized horizons into thick mineralized packages amenable to open pit mining
- Well documented phenomena with iron ore deposits such as Fire Lake, Mont Wright and Mont Reed and in graphite deposits such as Lac des Iles, Lac Guéret and Lac Knife

Simplified Mitchi copper bearing stratigraphy

1. K-spar nepheline gneiss

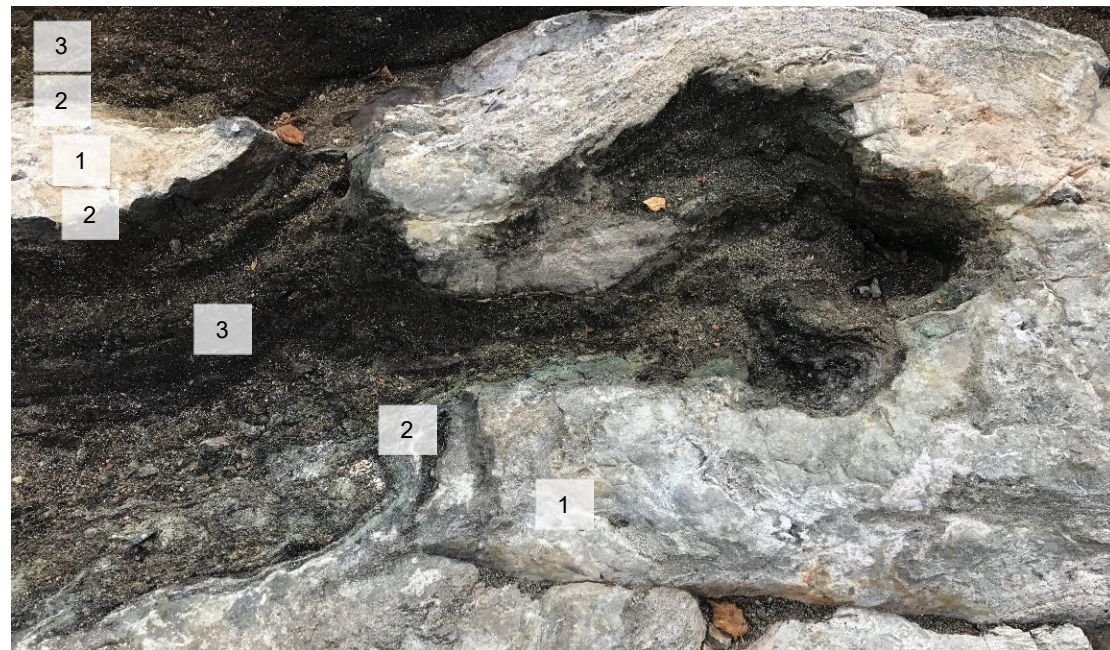
2. Diopsidite

3. Glimmerite (Phlogopite rich)

4. Calcite diopside marble (*not visible in picture*)

5. Paragneiss / basement (*not visible in picture*)

Cu minerals (Bn, Cc, Cp)
Most enriched facies varies
from one showing to another



50 cm

Why invest in COPPER?

- Copper is used in many sectors of the global economy – homes, factories, electronics, power generation & transmission
- Important factor in Electric Vehicle revolution – 5x more copper in EV than regular vehicle
- Demand for copper is growing from global “Green” transformation & infrastructure developments
- Six years of supply deficit in copper – 195,000 t deficit in 2017
- Avg. mine reserve grades are declining, few new discoveries and little exploration investments over the last 5 years
- Copper prices have been improving since hitting bottom in 2015
- Many geopolitical and labour protests uncertainties in major producing countries (e.g. Chile, Peru, Congo, Indonesia)

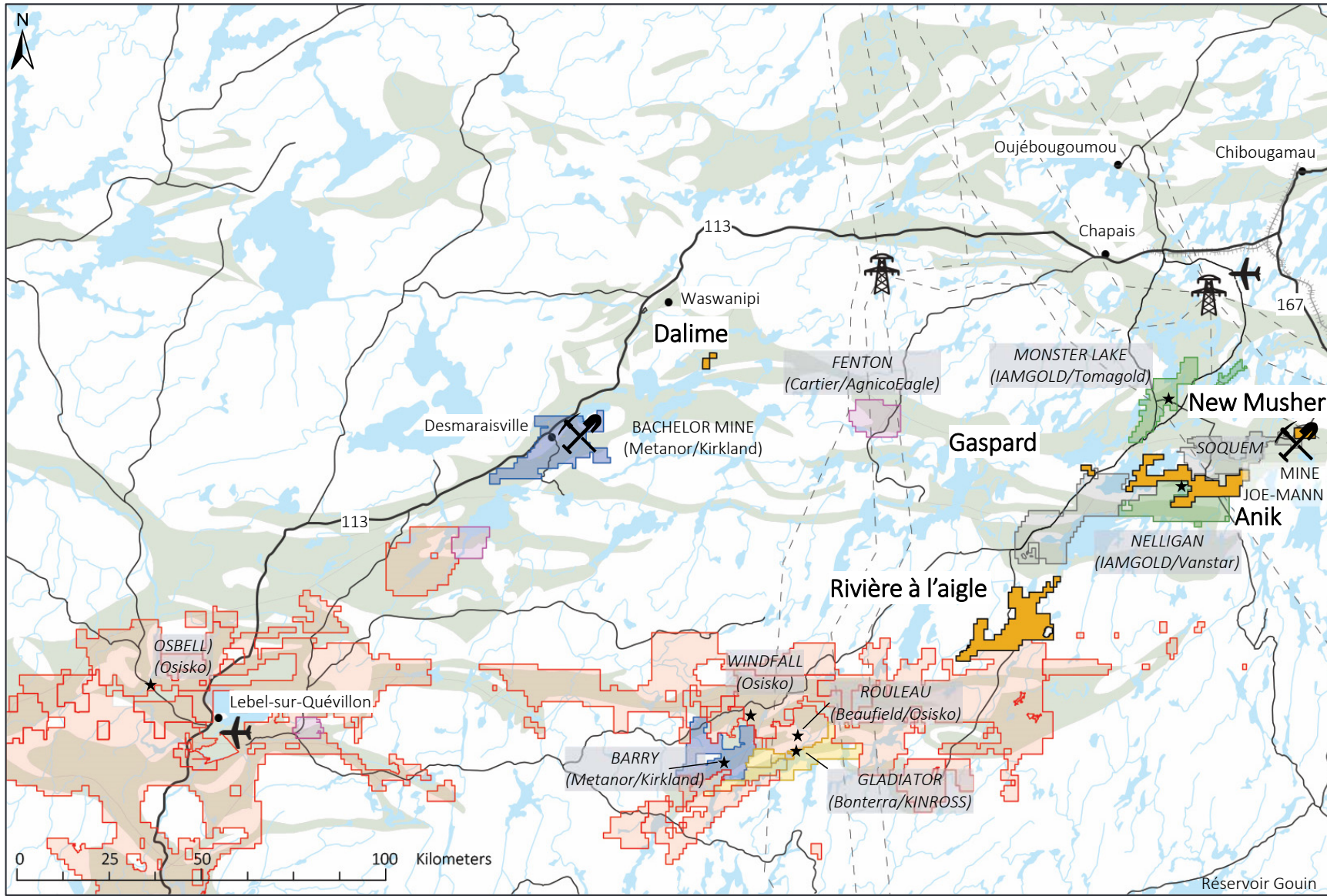


Exploration portfolio

	PROPERTY	CLAIMS	AREA (ha)	METAL	Comment
GRENVILLE	Cousineau	22	1,288	Cu, W	
ABITIBI PROJECTS	Anik	122	6,829	Au	Adjacent to IAMGOLD Exploration projects
	Rivière à l'aigle (RAL)	163	8,875	Au	North of Osisko Urban Barry East target
	Other	83	4,614	Au	

- Anik project, Chapais-Chibougamau region, Joe Mann mine area
Bobby & Kovi - A gold discovery in a very active area
Nelligan Extensions – adjacent to JV between IAMGOLD and Vanstar
- Rivière-à-l'aigle (RAL), Lebel-sur-Quévillon region, Windfall project area
Very strong gold in till anomalies in an underexplored area. One of the most active areas in Quebec at the moment due to aggressive Osisko drilling program (Windfall – Urban Barry)
- Five (5) gold projects in reconnaissance stages based on lithological and geochemical anomalies

Abitibi projects



- 5 major companies active in the sector

Management

Alain Cayer, P.Geo, M.Sc, Vice President Exploration

- VP Exploration of Géomega Resources
- Project geologist with Virginia Mines, Eleonore Project discovery
- Holds a M.Sc. in geology (mineral resources) from UQAM

Ingrid Martin, CPA, CA, CFO

- Currently CFO of Géomega Resources, Midland Exploration, Alopex Gold and Hinterland Resources. Director & CFO of Sphinx Resources.
- Holds a B.Sc. in accounting from HEC.

Michel Gauthier, P.Geo, OIQ, Ph.D, Technical advisor

- Director of Sphinx Resources and advisor to Midland Exploration and Fonds de Solidarité de la FTQ and SOQUEM
- Over 35 years experience in mineral exploration. Recently retired as a professor at UQAM (Montreal)
- Holds a Ph.D in geological engineering from École Polytechnique de Montreal

Experienced exploration team with more than 15 years experience in the research and development of mineral deposits.

Board of Directors

Kiril Mugerma, President & CEO

- President/CEO of Géomega Resources
- Previously exploration geologist with Gold Fields Ltd. and mining analyst with Industrial Alliance Securities
- Holds a B.Sc. from McGill University in Earth & Planetary Sciences

Mark Billings, CFA, Chairman

- President of Auxico Res. and Chairman of St-George Platinum & Base Metals
- Previously CEO & Chairman of Canamex Resources, Sr. VP Corp. Dev. & CFO of Argex Titanium and VP Corporate Finance with Desjardins Securities.
- Holds a B.A. (Highest Honours) in Political Science from Carleton University and MBA from Harvard Business School

David Charles, CFA, M.Sc.

- Director of Odyssey Res., Corp. Dev. for Highland Copper & Reunion Gold
- 28 years experience including managing director and head of mining research at Dundee Capital Markets and partner & senior mining analyst metals and mining with GMP Securities
- Holds a M.Sc (Applied) in Mineral Exploration from McGill University

Maxime Lemieux, LLC, Secretary

- Member of the National Capital Markets and M&A group at McMillan LLP
- Practice focused on securities, corporate finance and M&A in the mining and technologies sectors
- Extensive experience as director and member of audit committee of public companies

Pierre Bertrand, Eng.

- A geologist with 36 years of mining, exploration and management experience
- General manager of SOQUEM 2006-2015 and President in 2015 & 2016
- Project and district geologist with Inmet Mining up until 1998 and exploration management posts with SOQUEM from 1999
- Directly involved in the discovery of the Renard diamond mine

CONTACT US



Kiril Mugerman, President & CEO
kmugerman@kintavar.com

Alain Cayer, VP Exploration
acayer@kintavar.com

Kintavar Exploration Inc.
75 Boul. de Mortagne
Boucherville, QC J4B 6Y4
Canada

+1 450 641 5119

www.kintavar.com