



NEWS RELEASE  
For immediate distribution

### **Nasigon - Sud: 0.78% Cu, 4.37 g/t Ag over 8.97 m in channel sample**

- Four trenches over four geophysical anomalies returned copper mineralization
- *Nasigon-SUD*: 0.78% Cu, 4.37 g/t Ag over 8.97 m
- *Nasigon-EST*: 0.41% Cu, 3.61 g/t Ag over 6.45 m
- *Lac-Michel*: 0.37% Cu, 3.25 g/t Ag over 8.0 m
- *Toby*: 0.57% Cu, 8.34 g/t Ag over 6.65 m

**Montreal, Quebec, August 8, 2018** – Kintavar Exploration Inc. (the “Corporation” or “Kintavar”) (TSX-V: KTR) (FRANKFURT: 58V), is pleased to announce its first channel sample assays from the 2018 summer exploration program. Results from channel samples of 5 trenches out of the 10 completed to date have been received and compiled. The summary of the intersections obtained in these trenches can be seen in Table 1.

On the Nasigon corridor, assays from 4 trenches over an area of 2 km in the East-West direction by 600 m in the North-South direction have returned significant copper grades. The Nasigon-Sud composite channel (perpendicular to mineralized horizons), located 100 m south of the Nasigon showing (1.10% Cu and 3.4 g/t Ag over 10 m, see press release November 29, 2017) has returned 0.78% Cu and 4.37 g/t Ag over 8.97 m. The particularity of this trench is that in addition to the mineralized sedimentary units, a late stage extensional system is present which is accompanied by remobilization of copper sulphides. All the four trenches represent four individual horizons which remain open laterally (East-West) and correspond to various geophysical anomalies extending over several hundred meters each. Assays from the final 5 trenches are still pending.

The initial drilling program on the Nasigon grid was completed this past week. The copper sedimentary horizons of the Nasigon, Nasigon-Sud and Nasigon-Est trenches were all intersected successfully in the corresponding drill holes and assays are expected in fall.

On the Sherlock corridor, a composite channel was completed on the Toby showing which previously returned a grade of 0.89% Cu and 15.3 g/t Ag in grab sample (see press release August 5, 2018). The composite channel sample (perpendicular to the mineralized horizons), which is located 200 m to the East of the Sherlock showing, graded 0.57% Cu and 8.34 g/t Ag over a length of 6.65 m. The marble unit that was sampled is cross-cut by a late dyke on the southern end while the intersection remains open in all directions. The Toby showing is associated with the same geophysical anomaly as the Sherlock showing which now extends for over 900 m. Four other trenches are currently being completed on the Elementary showing (2.34% Cu, 18.5 g/t Ag) and the 007 showing (0.24% Cu and 3.5 g/t Ag) which were discovered on the Sherlock corridor in June and July (see press release August 5, 2018).

Additional trenches are planned for the month of August and September on the Huard (1.04% Cu, 8.7 g/t Ag) and Sarcelle (0.80% Cu, 12.2 g/t Ag) showings which were identified in June on the Hispana corridor . A geophysical survey covering that area was completed in the recent days which will be used to generate additional targets.

“Our two main corridors keep producing the results that we were hoping to see when our summer program started in June. Nasigon, that until recently was focused only on one showing, now has mineralization extending on surface for over 2 km. The Sherlock area, which already has a strike length of mineralization of over 4.5 km, shows great consistency. At the Toby trench, what started with a simple outcrop and a grab sample of 0.81% Cu, now is an important drilling target with mineralization open in all the directions. The style of mineralization and the bulk mining model that we are envisioning for the Mitchi project, combined with the consistency of grades and of the favorable sedimentary units is such that every mineralized outcrop has the potential to become an important zone.” comments Kiril Mugerma, president and CEO of Kintavar.

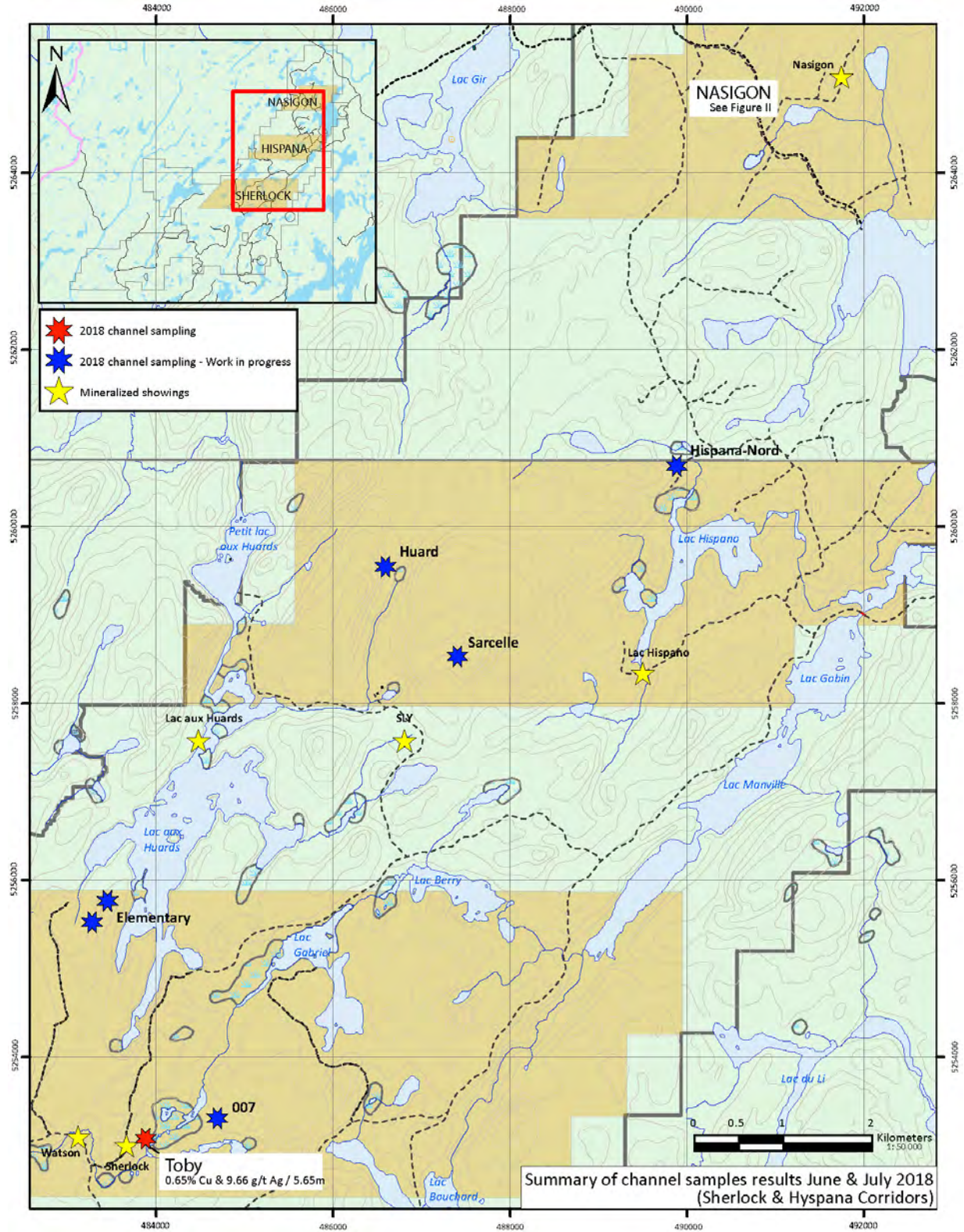


Figure 1: Summary of channel samples (Sherlock, Hispana and Nasigon corridors). [Full size map can be viewed here.](#)

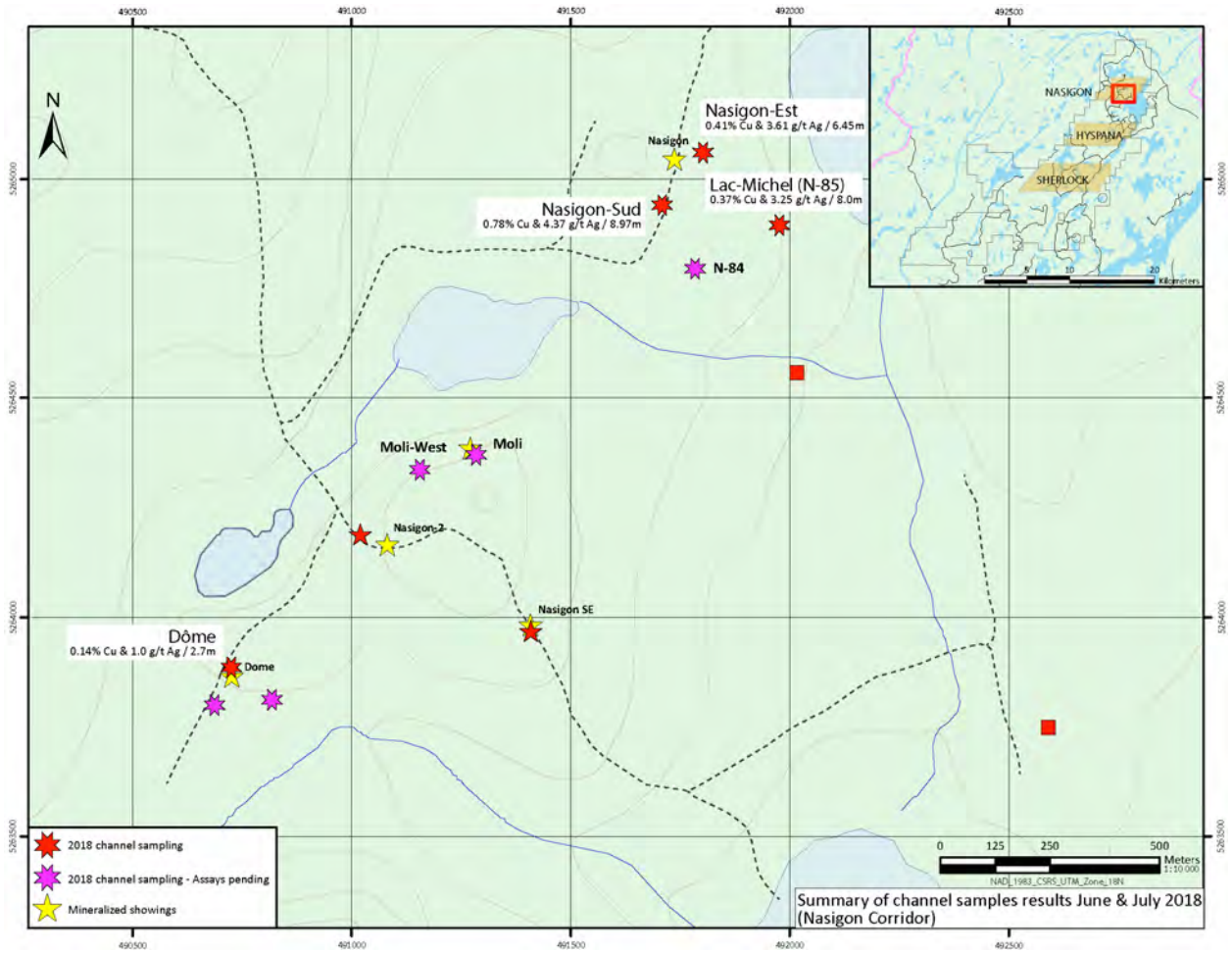


Figure 2: Summary of channel samples (Nasigon corridor). [Full size map can be viewed here.](#)

Table 1: Summary of initial channel samples from 2018 exploration program

Nasigon Corridor							
Trench	SAMPLE	Easting	Northing	Cu (ppm. %)	Ag (g/t)	Lithology	Intersection
Nasigon - Sud	X379420	491706	5264946	5560	3.2	Calc-Silicate Unit (CaSi). Marble and metasomatic rocks	0.78 % Cu and 4.37 g/t Ag / 8.97m
	X379421	491707	5264945	9880	5.4		
	X379422	491707	5264945	1.44%	8		
	X379423	491707	5264944	7030	3		
	X379424	491707	5264944	7390	4		
	X379425	491708	5264943	3280	2.1		
	X379426	491707	5264941	4240	3.4		
	X379427	491707	5264941	2.27%	12.5		
	X379428	491707	5264940	2920	1.9		
	X379429	491708	5264939	906	0.7		
	X379436	491698	5264936	4410	2.2	CaSi unit. Marble and metasomatic rocks	0.72 % Cu and 3.72 g/t Ag / 3.1m
	X379437	491699	5264935	5990	2.8		
	X379438	491699	5264935	1.14%	6.3		
Nasigon - Est	S743890	491795	5265072	2850	3.9	Marble. Metasediments and CaSi unit	0.41 % Cu and 3.61 g/t Ag / 6.45m
	S743891	491796	5265073	1940	1.3		
	S743892	491797	5265073	3110	2.9		
	S743894	491797	5265071	4280	2.3		
	S743895	491798	5265071	2710	1.8		
	S743896	491796	5265066	4100	3.6		
	S743897	491793	5265070	5080	4.9		
	S743898	491794	5265069	7050	6.6		
Lac-Michel (N-85)	S743952	491976	5264886	5270	4.5	Marble and CaSi unit	0.37 % Cu and 3.25 g/t A / 8.0m
	S743953	491976	5264886	2690	2.6		
	S743954	491980	5264887	104	<0,5		
	S743955	491977	5264884	8890	6.8		
	S743956	491978	5264884	1565	1.9		
	S743958	491978	5264883	5490	4.9		
	S743959	491980	5264882	1750	1.4		
	S743960	491980	5264882	6120	6.2		
	S743961	491981	5264881	2910	2.6		
Dome	S743025	490784	5263988	3060	1.1	Marble and metasomatic rocks	0.14 % Cu and 1 g/t Ag / 2.7m
	S743026	490784	5263987	409	<0,5		
	S743027	490784	5263987	1320	1.9		

Sherlock Corridor							
Toby	S743968	483832	5253050	1.01%	19.6	Marble. Metasediments and CaSi unit	0.57 %Cu and 8,34 g/t Ag / 6.65m
	S743969	483833	5253051	7230	11.6		
	S743970	483833	5253052	5960	7.6		
	S743971	483833	5253053	6870	9.7		
	S743972	483834	5253053	4670	4.4		
	S743973	483834	5253054	258	<0,5		
	S743974	483838	5253047	3790	4.5		
<p><i>Real thickness of the composite channel samples is estimated to be between 45 and 70% of the intersected thickness</i></p>							

All samples have been sent and prepared (PREP-31) by ALS Global laboratory in Val-d'Or. The pulp was sent to ALS Global laboratory in Vancouver for copper assays (CU-ICP61), silver assays (AG-ICP61) or a multi-elemental analysis by four acid digestion (ME-ICP61) and spectroscopy (ICP-AES/MS). Samples with assays higher than 10,000 ppm Cu were reanalyzed by atomic absorption (CU-OG62) at the ALS Global Vancouver laboratory. Quality controls include systematic addition of blank samples and certified copper standards to each batch of samples sent to the laboratory.

### About the Mitchi Property

The Mitchi property (approx. 30,000 hectares, 100% owned) is located west of the Mitchinamecus reservoir, 100 km north of the town of Mont-Laurier. The property covers an area of more than 300 km<sup>2</sup> accessible by a network of logging and gravel roads with a hydro-electric power substation located 14 km to the east. The property is located in the north-western portion of the central metasedimentary belt of the Grenville geological province. Many gold, copper, silver and/or manganese mineralized showings have been identified to date, with many characteristics suggesting of a sediment-hosted stratiform copper type deposit (SSC) in the Eastern portion of the property and Iron Oxide Copper Gold ore (IOCG) and skarn type deposits in the Western portion. Osisko holds a 2% NSR on 27 claims of the southern portion of the Mitchi property, outside of the sedimentary basin.

NI-43-101 Disclosure

Alain Cayer, P.Geo., MSc., Vice-President Exploration of Kintavar, is Qualified Person under NI 43-101 guidelines who supervised and approved the preparation of the technical information in t his news release.

For further information contact:

Kiril Mugerman,

President and CEO

Telephone: +1 450 641 5119 #5653

Email: [kmugerman@kintavar.com](mailto:kmugerman@kintavar.com)

Web: [www.kintavar.com](http://www.kintavar.com)

**Forward looking Statements:**

*Neither TSX Venture Exchange nor its Regulation Services Provider (as that term is defined in the policies of the TSX Venture Exchange) accepts responsibility for the adequacy or accuracy of this release.*

*This news release contains statements that may constitute “forward-looking information” or “forward looking statements” within the meaning of applicable Canadian securities legislation. Forward-looking information and statements may include, among others, statements regarding future plans, costs, objectives or performance of the Corporation, or the assumptions underlying any of the foregoing. In this news release, words such as “may”, “would”, “could”, “will”, “likely”, “believe”, “expect”, “anticipate”, “intend”, “plan”, “estimate” “target” and similar words and the negative form thereof are used to identify forward-looking statements. Forward-looking statements should not be read as guarantees of future performance or results, and will not necessarily be accurate indications of whether, or the times at or by which, such future performance will be achieved. No assurance can be given that any events anticipated by the forward-looking information will transpire or occur, including additional closings of the private placement referred to above, or if any of them do so, what benefits the Corporation will derive. Forward-looking statements and information are based on information available at the time and/or management's good-faith belief with respect to future events and are subject to known or unknown risks, uncertainties, assumptions and other unpredictable factors, many of which are beyond the Corporation's control. These risks, uncertainties and assumptions include, but are not limited to, those described under “Risk Factors” in the Corporation's management's discussion and analysis for the fiscal year ended December 31, 2017, which is available on SEDAR at [www.sedar.com](http://www.sedar.com); they could cause actual events or results to differ materially from those projected in any forward-looking statements. The Corporation does not intend, nor does the Corporation undertake any obligation, to update or revise any forward-looking information or statements contained in this news release to reflect subsequent information, events or circumstances or otherwise, except if required by applicable laws.*